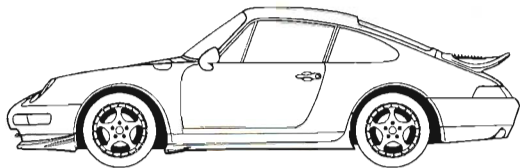


PORSCHE



911 Carrera

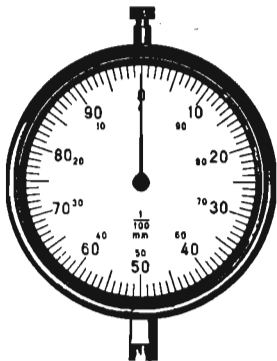
911 Carrera 4

911 Carrera RS

94 Model

95 Model

**Technical
Speci-
fications**



Preface

This booklet

Technical Specifications

provides the Porsche mechanic with dimensions and adjustment values for carrying out repairs in the correct manner.

We assume that those concerned are familiar with the operations described in the Repair Manual.

When looking up the various data, be sure to cross check against the Technical Information; the specified values may change.

Technical Specifications

**911 Carrera (993)
94, 95 Models**

**911 Carrera 4 (993)
95 Model**

**911 Carrera RS (993)
95 Model**

Table of Contents

Page

Conversion Factors and Dimensioning Units	7
Survey of Type Designations – Overview of 911 Carrera	8
Structure of Engine Codes	12
Engine Type Codes	13
Structure of Chassis Number Codes	14
Structure of Transmission Codes	16
Survey Type Codes - Transmission	17
Technical Data, 911 Carrera and 911 Carrera 4	18
Technical Data, 911 Carrera RS	31

Engine

Tightening Torques for Engine	41
Tightening Torques: Removing and Fitting Engine	45
Overview of Tolerances with Wear Limits - All 911 Carrera Engines	46
Crankshaft - Normal and Reconditioning Dimensions	48
Weight Groups of Connecting Rods	50
Determining Parallel Alignment of Sprockets	52
Pistons	54
Pistons and Cylinders M64/05/06/07/08	56
Pistons and Cylinders M64/20 RS	57 Engine
Checking Valve Guides	59
Table of Dimensions for Tightening Valve Guides	60
Measuring Valves	61
Checking and Setting Installation Length of Valve Springs	62
Camshafts, Timing	64
Securing Cylinder Heads	65
Checking and Adjusting Drive Belts for Alternator and Ventilator Wheel	66

Fuel System

Check and Adjustment Values for Engine Types M64/05/06/07/08/20	67
Tightening Torques for Fuel System	68

Transmission

Technical Data, Front Axle Drive Z64/20	70
Technical Data, 6-Gear Manual Transmission G50	70
Technical Data, 6-Gear Manual Transmission 911 Carrera RS	71
Technical Data, Manual Transmission 911 Carrera	73
Tightening Torques for Manual Transmission and Transmission Suspension 911 Carrera	75
Technical Data, 6-Gear Manual Transmission G 64 911 Carrera 4	77
Tightening Torques for Manual Transmission, Front Axle Drive, Transmission Suspension and Central Tube, 911 Carrera 4	80
Technical Data, 4-Gear Tiptronic Transmission A50	82
Tightening Torques for Tiptronic Transmission	83
Tightening Torques for Transmission Suspension	85
Tightening Torques for ATF Lines and Cooler	85
Tightening Torques for Selector Lever Action	86
Checking Clutch Drive Plate for Wear	87

Front Axle and Steering

Tightening Torques for Front Axle	88
Tightening Torques for Steering	91

Rear Axle

Tightening Torques for Rear Axle	92
--	----

Brakes, Wheels, Tires, Measurement

Adjustment Values for Vehicle Measurement	95
Technical Data, Brake 911 Carrera	98
Technical Data, Brake 911 Carrera 4	100
Technical Data, Brake 911 Carrera RS	102
Tightening Torques for Mechanical Brake System	104

Air Conditioning

Technical Data of Air Conditioning	108
--	-----

Body

Dimensions for Floor System	110
Dimensions for Structure	112

Conversion Factors and Dimensioning Units

	Former Unit		New Units
Pressure	Technical atmosphere	at (kp/cm ²)	Bar (bar)
Output	Horsepower	HP	Kilowatt (kW)
Force	Kilopond	kp	Newton (N)
Torque	Kilopondmeter	kpm	Newtonmeter (Nm)

Conversion Factors

at (kp/cm ²)	into bar	x 0.981
kp	into N	x 9.81
HP	into kW	x 0.736
kpm	into Nm	x 9.81
Nm	into ftlb	x 0.737
m/s	into km/h	x 3.6
at	into mmHg	x 735.56
km/h	into mph (miles)	x 0.621
°F (Fahrenheit)	into °C	(°F-32)x0.555
l	into U.S. gal	x 0.264
l	into Imp. gal	x 0.22

The conversion factor 10 can be used to convert tightening torques from kpm into Nm. This is sufficient for workshop applications.

