

Technical Bulletin

Model
6 Cyl.

Group
8

Subject
Heater Pipe in Engine Compartment

Part Identifier
8068

Number
9604

ATTENTION: Service Manager / Service Technician

Models Affected:
911 Carrera M.Y. 1995 and 1996
911 Carrera 4 M.Y. 1995 and 1996
911 Carrera 4S as of M. Y. 1996

Concern: The one piece engine compartment heater pipe is now replaced by a two piece pipe.

General Information: To promote easier installation, the former version heater pipe (1A in Figure 1) is now replaced with a two piece version (1 & 2 in Figure 1).

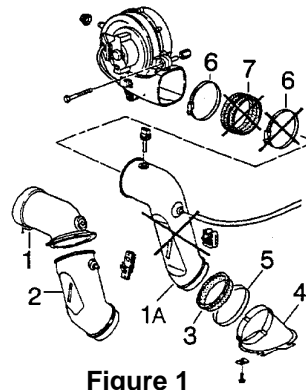


Figure 1

Additional changes to related parts also include shortening of the slots in the connecting socket (4 In Figure 1) by 5 mm and lengthening of the rubber seal (3 in Figure 1) by 5 mm. The introduction of the two piece pipe along with the additional changes took place in stages during production:

- Two piece pipe installed as of November 21, 1995 production.
- Connecting socket slots shortened by 5 mm as of December 20, 1995 production.
- Rubber seal lengthened by 5 mm as of February 16, 1996 production.

Parts Information: New Version Heater Pipe and Related Parts.

Key	Description	Part Number	Qty
1	Pipe, Upper	993 211 343 00	1
2	Pipe, Lower	993 211 346 01	1
3	Rubber Seal	993 211 350 00	1
4	Socket	993 211 034 01	1
5	Clamp	999 512 505 02	1
6	Clamp	999 512 539 00	1



Technical Bulletin

Model
6 Cyl.

Group
8

Subject
Heater Pipe in Engine Compartment

Part Identifier
8068

Number
9604

Repair Information:

If replacement of the one piece heater pipe becomes necessary, use only the new version two piece heater pipe and related parts.

Note: When removing the former version connecting socket, it will be necessary to remove the spark plug wires 1-1 and 1-5. After installation of the new connecting socket with shorter 5 mm slots, reinstall the plug wires for Cylinders 1-1 and 1-5.

P
O
R
S
C
H
E

C
A
R
S

N
O
R
T
H

A
M
E
R
I
C
A

I
N
C
.

Important Notice: Porsche Cars N.A Technical Bulletins are intended for use by professional technicians, not a "Do-it-yourselfer." They are written to inform these technicians of conditions that may occur on some vehicles, or to provide information that could assist in the proper service of a vehicle. Special tools may be required to perform certain operations identified in these bulletins. Use of tools and procedures other than those recommended in these bulletins may be detrimental to the safe operation of your vehicle. Properly trained technicians have the equipment, tools, safety instructions and know-how to do a job properly and safely. If a condition is described, do not assume that the bulletin applies to your vehicle, or that your vehicle will have that condition. See your Porsche Dealer for information on whether your vehicle may benefit from the information. Part numbers listed in these bulletins are for reference only. Always check with your authorized Porsche dealer to verify correct part numbers. ©1996 Porsche Cars North America, Inc.

Dealership _____ Service Manager _____ Shop Foreman _____ Service Technician _____
Distribution _____ Asst. Manager _____ Warranty Admin. _____ Service Technician _____
Routing _____

The trademarks Porsche®, Targa®, Carrera®, Tiptronic®, Varioram® and the Porsche Crest are registered trademarks of Dr. Ing. h.c.F. Porsche AG and its affiliate, Porsche Cars North America, Inc.

©1996 Porsche Cars
North America, Inc.
All rights reserved. Cannot be
reproduced without written permission.
Service & Parts Publications.



SERVICE

Page 2 of 2
September 26, 1996