

Technical Bulletin

Model
6 Cyl.

Group
4

Subject: **ABS – System, Hydraulic Unit
and Control Unit**

Part Identifier
4530

Number
9407

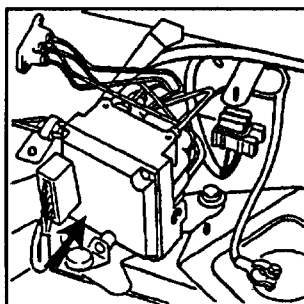
ATTENTION: Service Manager / Service Technician

Model Affected: *911 Carrera, Model Year 1995*

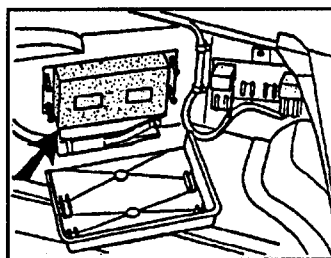
Concern: As of March 1994, revised hydraulic units and control units are being installed in production for the ABS and ABS/ABD systems.

Part Numbers: The Porsche part numbers remain the same. Identification of the old and new versions can only be done through the serial number or manufacturing date of the ABS/ABD control unit.

993 618 125 00 – ABS Control Unit
993 355 955 00 – ABS Hydraulic Unit
993 618 126 00 – ABS/ABD Control Unit
993 355 955 50 – ABS/ABD Hydraulic Unit



Hydraulic Unit



Control Unit

Repair Information:

After stocks of the present hydraulic units and control units are used up, only the new version will be available.

NOTE 1: THE NEW HYDRAULIC UNIT MUST ONLY BE INSTALLED TOGETHER WITH THE NEW CONTROL UNIT.

THIS MEANS IF AN OLD VERSION HYDRAULIC UNIT IS BEING REPLACED WITH A NEW VERSION, THE CONTROL UNIT MUST ALSO BE REPLACED.

NOTE 2: THE NEW VERSION CONTROL UNIT CAN BE INSTALLED TOGETHER WITH THE OLD VERSION HYDRAULIC UNIT.

PORSCHE
CARS
NORTH
AMERICA
INC.



Technical Bulletin

Model
6 Cyl.

Group
4

Subject: **ABS – System, Hydraulic Unit
and Control Unit**

Part Identifier
4530

Number
9407

Identification:

Hydraulic Unit – New Version

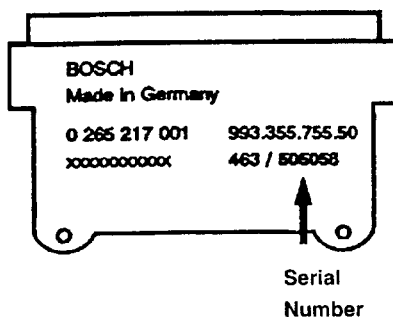
The identification is through the serial number.
Hydraulic units manufactured from the below date/serial numbers
are the revised version hydraulic units.

ABS-Hydraulic Unit (993 355 955 00)

As of production date/serial number **462/502372**
year month serial #

ABS/ABD-Hydraulic Unit (993 355 955 50)

As of production date/serial number **463/505058**
year month serial #



Older Version: Hydraulic units have a lower serial number than listed above.

PORSCHE
CARS
NORTH
AMERICA
INC.



Technical Bulletin

Model
6 Cyl.

Group
4

Subject: **ABS – System, Hydraulic Unit
and Control Unit**

Part Identifier
4530

Number
9407

Identification: (cont.)

Control Unit – New Version

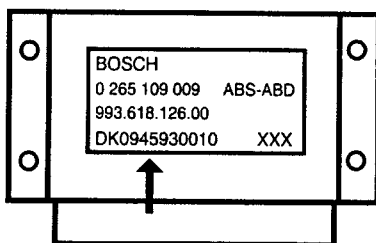
The identification is through the production date. Control units with a four (4) number production date are the new versions.

ABS-Control Unit (993 618 125 00)

As of production date (week/year) D101 51 93 XXXX
type# week year serial #

ABS/ABD-Control Unit (993 618 126 00)

As of production date (week/year) DK09 45 93 XXXX
type# week year serial #



New Version Control Unit

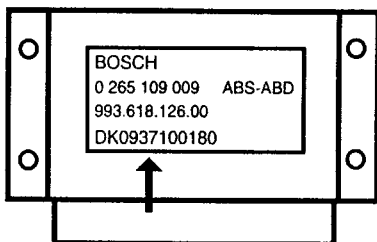
Note: Control Units of the old version have a production date with only three (3) numbers.

ABS-Control Units

D101 372 0XXXX
type# year month serial #

ABS/ABD-Control Units

DK09 371 0XXXX
type# year month serial #



Old Version Control Unit



Technical Bulletin

Model
6 Cyl.

Group
4

Subject: ABS – System, Hydraulic Unit
and Control Unit

Part Identifier
4530

Number
9407

Component Table:

NEW HYDRAULIC	OLD HYDRAULIC	NEW CONTROL UNIT	OLD CONTROL UNIT
New Control Unit? Yes	New Control Unit? Yes	New Hydraulic? Yes	New Hydraulic? No
Old Control Unit? No	Old Control Unit? Yes	Old Hydraulic? Yes	Old Hydraulic? Yes

Important:

Please inform your Parts Department of the component requirements. (Over-the-counter sales.)

Diagnosis:

If the incorrect hydraulic and control unit is installed, the "fault code 40 — Return Pump" will be displayed.

The fault can only be registered through an ABS operation (bad road condition).

The fault will not be registered by "normal" braking.

Warranty:

Failure to use the correct part and the resultant repair work to diagnose and repair is not a warranty matter.

Literature:

Workshop Manual 911 Carrera (993), Volume IV, page 45-1.

